

Retail GAP Summary Regional Trade Area

Full-Service Restaurants  \$28 Million

Department Stores  \$26 Million

Electronics  \$11 Million

Home Furnishings  \$8 Million

Sporting Goods  \$6 Million

Cosmetics & Beauty  \$4 Million

Hobby & Toys  \$3 Million

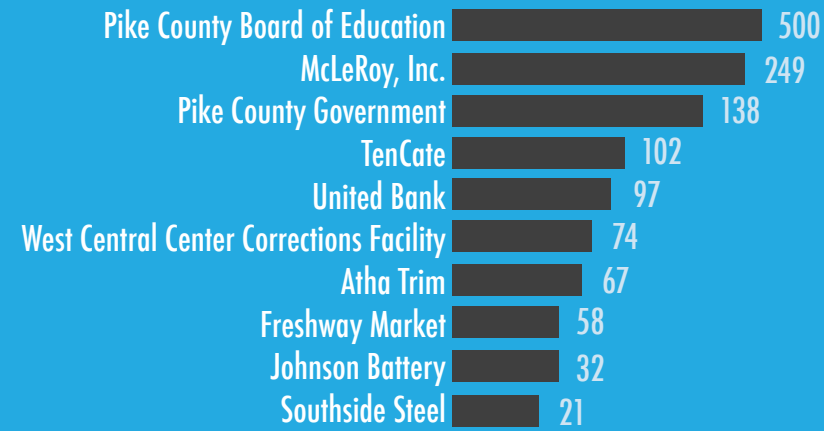
Household Appliances  \$3 Million

Women's Clothing  \$3 Million

Hardware  \$3 Million

Automotive  \$2 Million

Major Employers by No. of Employees



zebulongeorgia

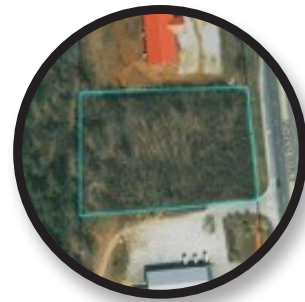
Focus Properties



10296 Hwy 19 N. Site
11.5 Acres
Vickie Cash
770.584.1586



Hwy 19 N Site
2.30 Acres
Alicia Gibson
770.584.1854



Hwy 19 S Site
2 Acres
Angi Pilkenton
770.468.3549



Giant Mart Center
4.08 Acres
Mike Howell
770.584.3060

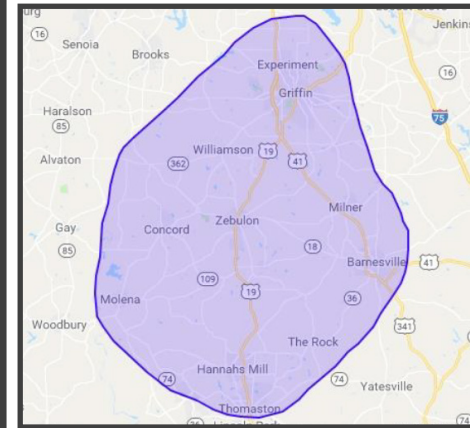


Mill Commons Site
16 +/- Acres
Angi Pilkenton
770.468.3549



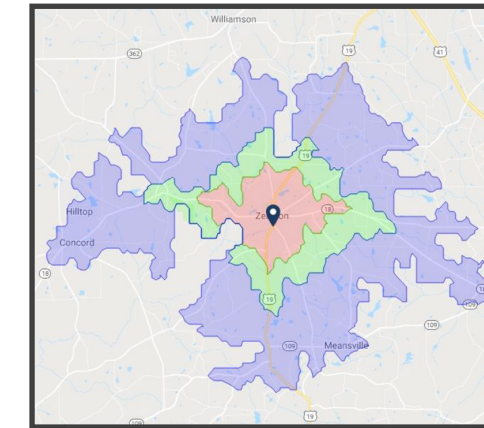
Hwy 18 Spaces & Outparcels
1,250 SF - 10,000 SF
Dee McLeRoy
770.468.1323

Demographics/Location

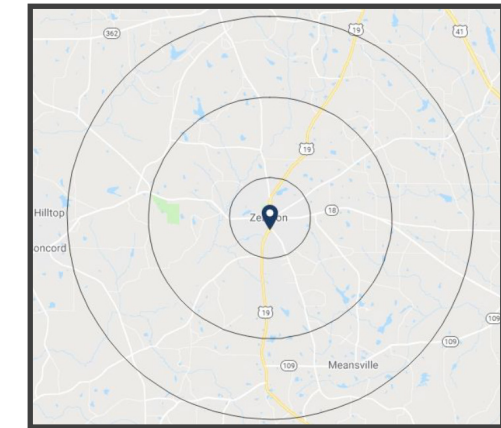


Regional Retail Trade Area

Q2 2018 Population	103,835
Total # of Employees	35,190
Median HH Income	\$40,436
Average HH Income	\$53,910



	3 Min Drive Time	5 Min Drive Time	10 Min Drive Time
Q2 2018 Population	1,236	1,950	5,137
Total # of Employees	411	629	1,289
Median HH Income	\$39,649	\$40,879	\$46,556
Average HH Income	\$49,536	\$51,558	\$59,815



	1 Mile Radius	3 Mile Radius	5 Mile Radius
Q2 2018 Population	1,155	2,796	7,617
Total # of Employees	383	885	1,657
Median HH Income	\$39,704	\$42,489	\$49,494
Average HH Income	\$49,653	\$53,893	\$64,403

The Pike County Courthouse is located in the center of the Square in downtown Zebulon. It's actually the third building to house the government of Pike County. And, Zebulon is the second county seat of Pike.

Back in 1821 when Pike County was organized by the Georgia legislature, it was carved from Monroe County. When a slice of Pike was made into Upson County in 1824, a new centrally-located site for the county seat was chosen and Zebulon was established.

The Zebulon Ginning and Fertilizer Company was organized in 1892 and boasted two batteries of four gins each. They could produce 100 bales a day by 1921. The firm's warehouse had room for 2,000 bales of cotton and was bonded by the U.S. government.

The Eastview Cemetery is the original site of the Zebulon Baptist Church that can trace its roots back to 1823 when a meeting house was erected on these grounds.

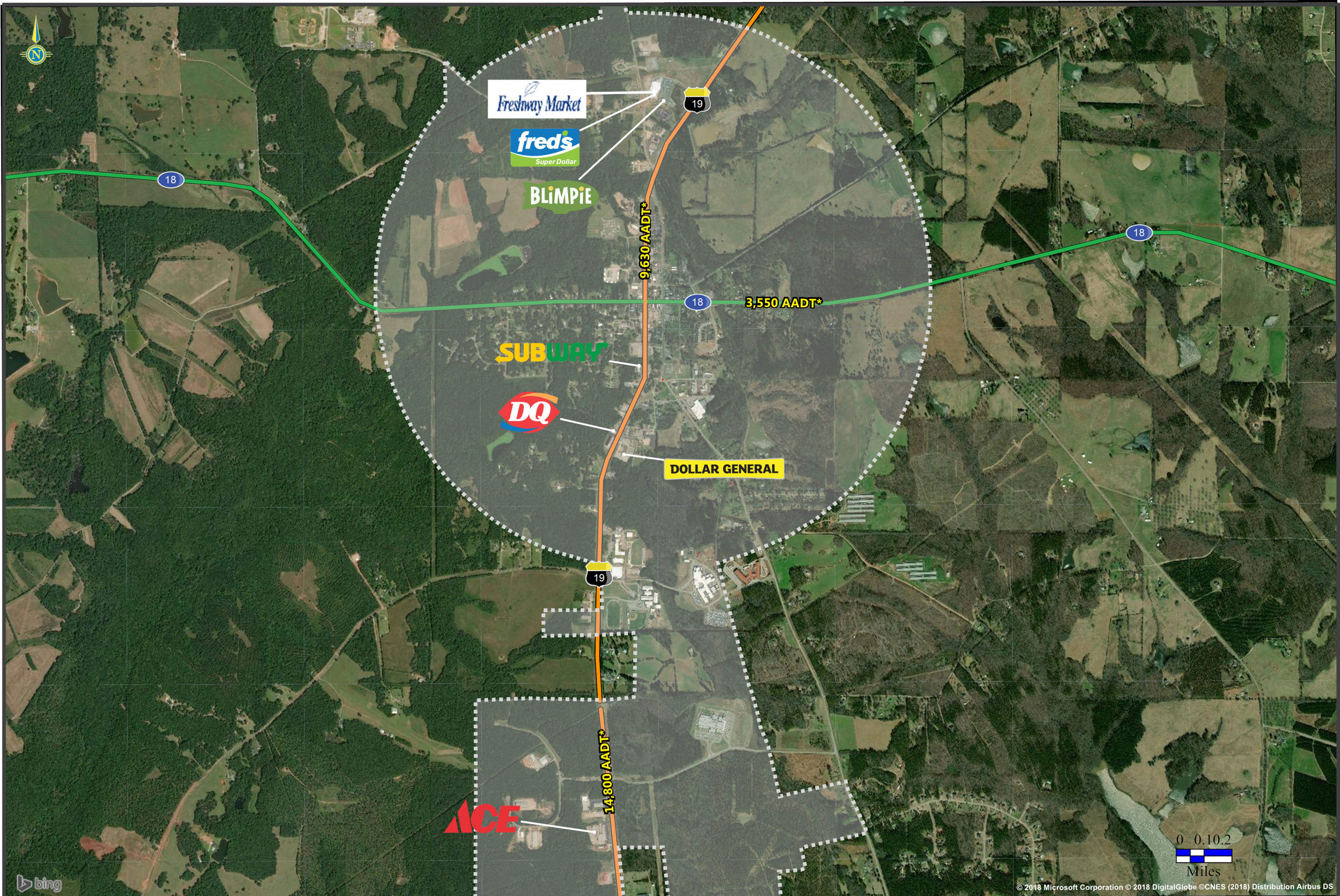
The canning plant in Zebulon began operation in 1938 and was known as the Bankston and Edwards Canning Plant. Joel Edwards and his brother-in-law Chester Bankston started the cannery as a way of using surplus peaches from their farm operation.

NextSite

Chuck Branch
cbranch@nextsite.net
205.218.9652



Ginny Blakeney
gblakeney@pikecoga
770.468.0379



ZEBULON, GEORGIA

Major Retail Aerial

This map was produced using data from private and government sources deemed to be reliable. The information herein is provided without representation or warranty.

NextSite