

## Pike County Business Park

Zebulon, GA 30295  
Pike County

### Contact

Georgia Power Community & Economic Development  
Phone: 404-506-3733  
Email: econdevga@southernco.com  
www.SelectGeorgia.com

### Property

**Largest Tract:** 38  
**Remaining Acres:** 111  
**Total Acres:** 148  
**Sale or Lease:** Sale  
**GRAD Site:** No  
**Zoning:** Light Industrial

### Workforce

**County Laborforce:**<sup>1</sup> 8,803  
**County Average Weekly Wage:** \$655  
**County Unemployment Rate:** 3.1%

### Incentives

**Jobs Tax Credit:** \$1750 / job  
**Investment Tax Credit:** 1%  
**City Freeport Category 1,2,3,4:** 100%,100%,100%,0%  
**County Freeport Category 1,2,3,4:** 100%,100%,100%,0%  
**Opportunity Zone:** No  
**Federal Opp. Zone:** No  
**Less Developed Census Tract:** No  
**Military Zone:** No  
**Foreign Trade Zone:** No



### Utilities

**Water On Site:** Yes  
**Water Main Size:** 10 inches  
**Sewer On Site:** Yes  
**Sewer Main Size:** 10 inches  
**Gas On Site:** No  
**Gas Main Size:** 6 inches  
**Electric Provider:** Southern Rivers Energy

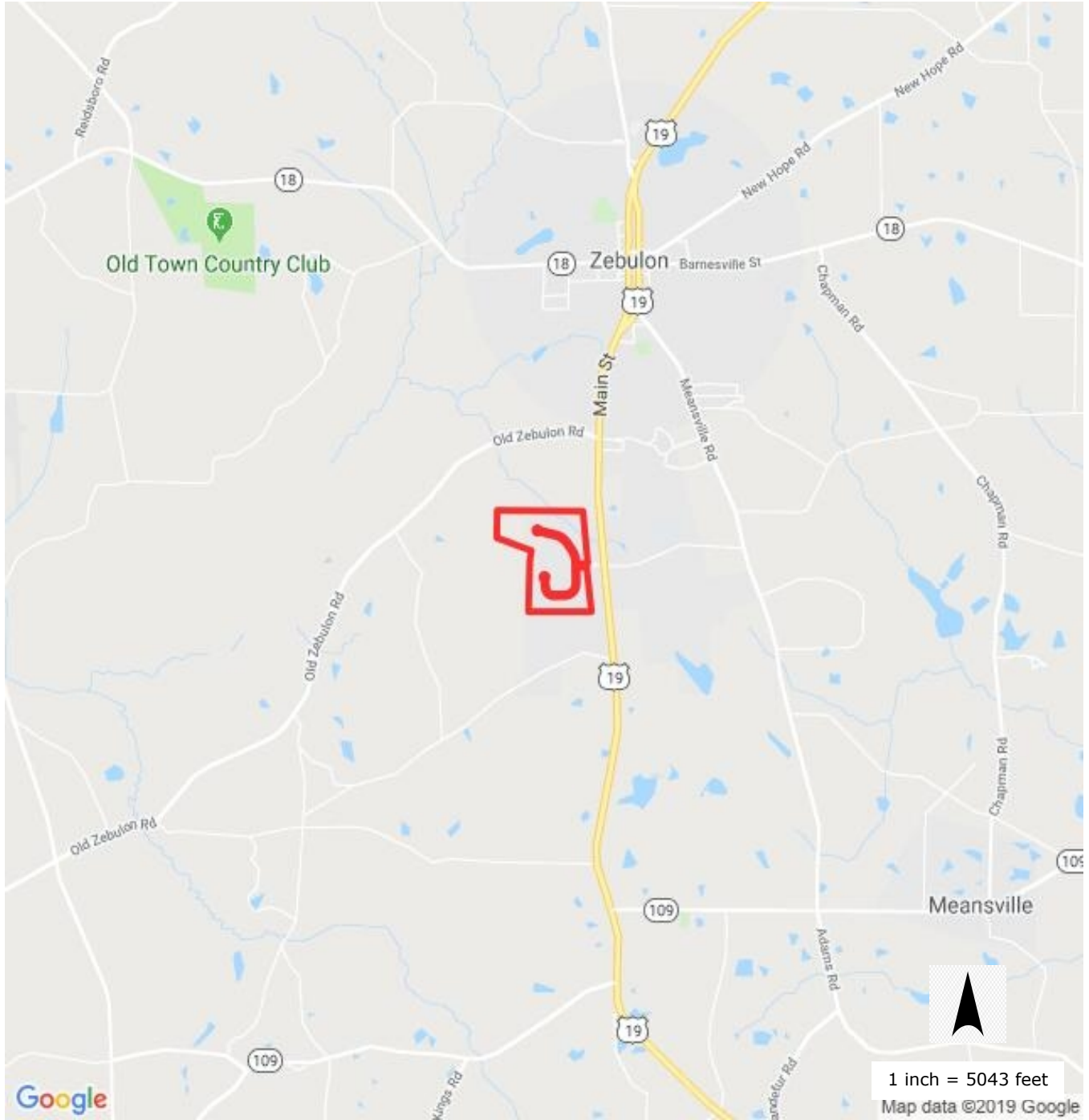
### Taxes

**Effective Property Tax:** \$13.82 per thousand dollars FMV  
**Millage Rate:** 34.56  
**Sales Tax:** 7%

### Transportation

**Nearest International Airport:** Hartsfield-Jackson Atlanta International, 38.8 miles  
**Nearest Interstate:** I-75, 18.4 miles  
**Nearest Port 1:** Port of Savannah, 198.4 miles  
**Nearest Port 2:** Port of Brunswick, 212.3 miles  
**Nearest Intermodal:** Fairburn Industry Yard, 34.7 miles  
**Rail Served:** No  
**Rail Provider:**

<sup>1</sup> Monthly workforce data from the Georgia Department of Labor



1 Monthly workforce data from the Georgia Department of Labor

**Sources:** Georgia Power Economic Development, Georgia Department of Labor, Georgia Department of Revenue, Georgia, DCA, Georgia DOT, TeleAtlas  
Georgia Power Community & Economic Development | 75 Fifth Street NW, Suite 150 | Atlanta, GA 30308 | [www.SelectGeorgia.com](http://www.SelectGeorgia.com)

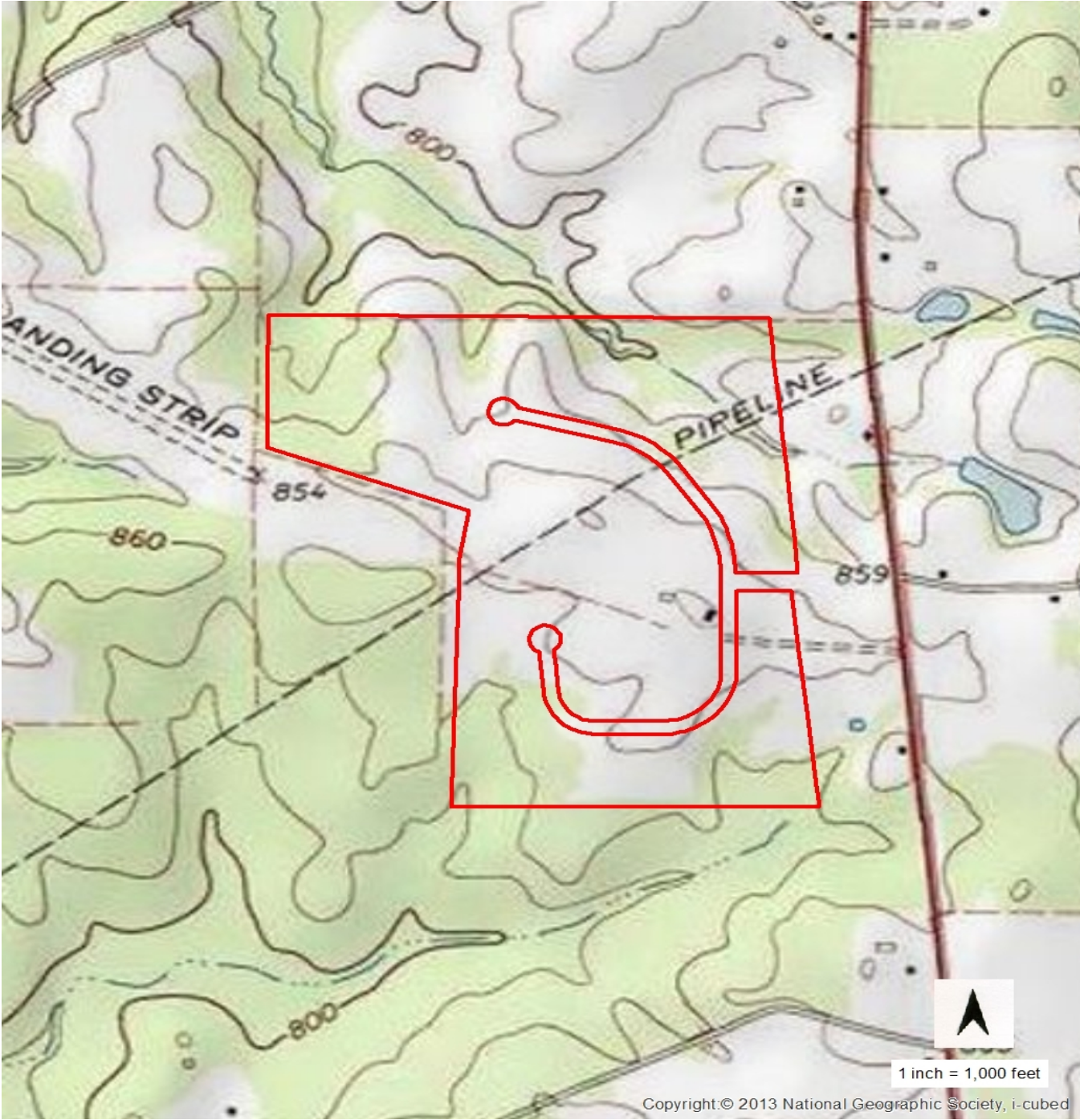
This information is provided "as is" without warranty of any kind either express or implied. © 2019



<sup>1</sup> Monthly workforce data from the Georgia Department of Labor

**Sources:** Georgia Power Economic Development, Georgia Department of Labor, Georgia Department of Revenue, Georgia, DCA, Georgia DOT, TeleAtlas Georgia Power Community & Economic Development | 75 Fifth Street NW, Suite 150 | Atlanta, GA 30308 | [www.SelectGeorgia.com](http://www.SelectGeorgia.com)

This information is provided "as is" without warranty of any kind either express or implied. © 2019



1 Monthly workforce data from the Georgia Department of Labor  
**Sources:** Georgia Power Economic Development, Georgia Department of Labor, Georgia Department of Revenue, Georgia, DCA, Georgia DOT, TeleAtlas  
Georgia Power Community & Economic Development | 75 Fifth Street NW, Suite 150 | Atlanta, GA 30308 | [www.SelectGeorgia.com](http://www.SelectGeorgia.com)  
This information is provided "as is" without warranty of any kind either express or implied. @ 2019